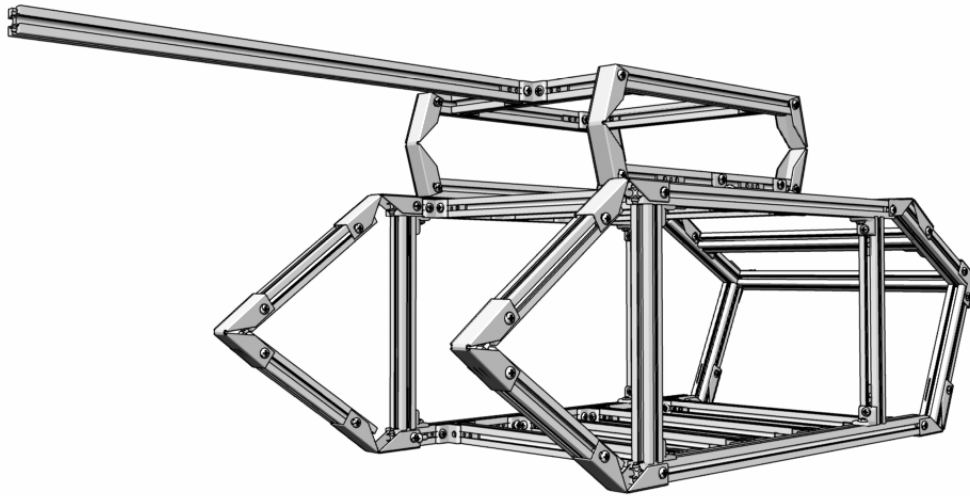


Lubic TANK Assembling Instructions



KAIREN

【Used Parts List】

Designation	Contents	Used No.	Required No.	
Lubic-160	160mm Frame	8 pcs	8 pcs	
Lubic-192	192mm Frame	7 pcs	7 pcs	
Lubic-256	256mm Frame	13 pcs	13 pcs	
Lubic-384	384mm Frame	2 pcs	2 pcs	
Lubic-448	448mm Frame	3 pcs	3 pcs	
Lubic-LP	Bracket	58 pcs	3 bags	
Lubic-3S-20	Metal Slide (3-hole type)	134 pcs	7 bags	
Lubic-2S-20	Metal Slide (2-hole type)	9 pcs	1 bag	
Lubic-SS-20	Metal Slide (1-hole type)	56 pcs	3 bags	
SC6M4-40	M4 Millimeter Screw (6mm length)	52 pcs	2 bags	
SC8M4-40	M4 Millimeter Screw (8mm length)	130 pcs	4 bags	
Lubic-CAP8	Corner Bracket (three-sided)	2 pcs	1 set	
Lubic-CAP135	Corner Bracket	14 pcs	4 sets	
Lubic-MBSC	Motherboard Fixing Screw	9 pcs	1 bag	
SC16H-4	Power Supply Fixing Screw	4 pcs	1 bag	
SC6H-40	HDD Fixing Inch Screw	4 pcs	1 bag	
SC10M3-40	Drive Fixing Millimeter Screw	4 pcs	1 bag	
Lubic-SWR2	Power Supply, Reset Switch	1 pc	1 set	

[Introduction]

We appreciate for purchasing our product of “Lubic TANK” series.

This product is a kit for assembling PC case by using aluminum frames, joint parts and panels.

- Expansion and remodeling applicable to the used environment is enabled by combining this product with option parts that are separately sold. Or this can be recreated as other purposes besides PC cases.
- We are transmitting topics or information related to this product across the official website of Lubic“ www.lubic.jp ”. It provides a lot of fulfilled contents such as opportunities for exchanging views lively among the users or announcement for completed products.

[Inquiries related to this product]

HOEI BLDG. 5F, 11-1, Miyuki-cho, Tokorozawa-shi, Saitama Zip 359-1115

Kairen. Co., Ltd. “Support Desk”

TEL : 81-4-2928-6836 FAX : 81-4-2929-6297

<http://www.lubic.jp/>

support@lubic.jp

[Notes in advance to assembly work]

Please read this manual before starting an assembly work.

Please check that all contents are all lined up.

[Notes during assembly work]

Please work at horizontal and well-balanced place.

Use of work gloves are recommended for preventing from causing accidents or damages.

Please conduct work with following the work procedures. Incorrect process may lead to the potential cause of damages or accidents.

Please be careful not to scratch the furniture around.

A cross slot screwdriver is required for work. Please prepare separately.

The contents of this product are designed to be fit to the size of the completed product based on the instruction manual.

Protection film is coated on the metal fittings or acrylic panels. Please remove the film upon use.

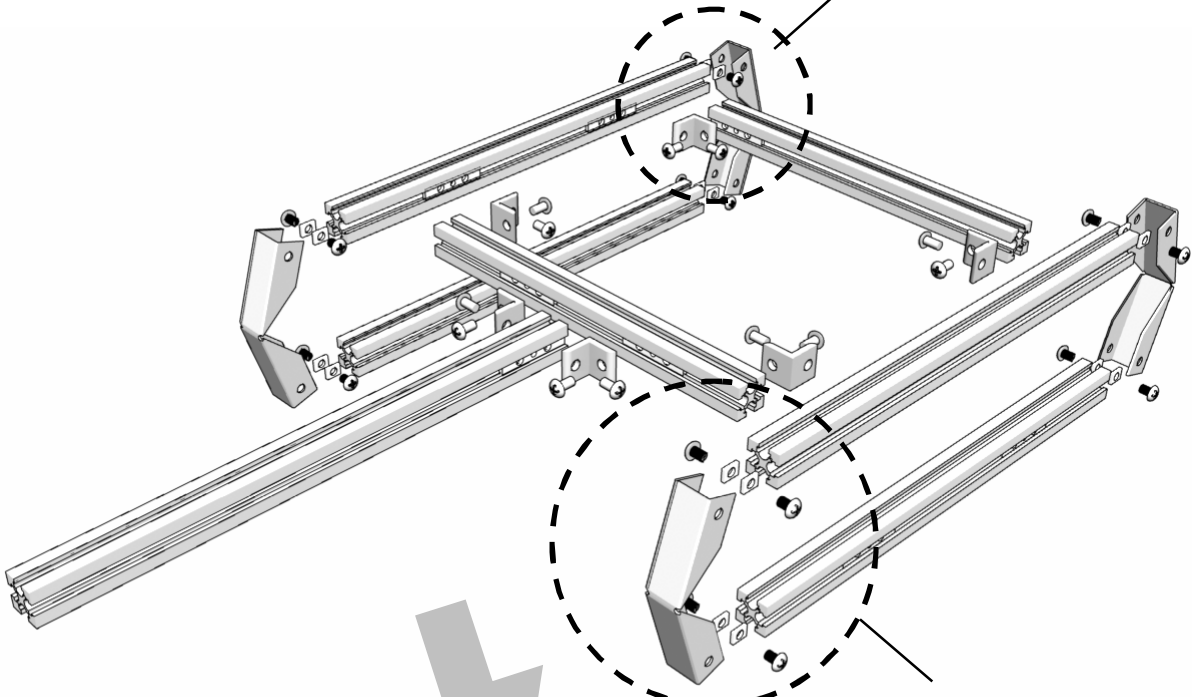
Please be very careful with the direct contact between frames or metal fittings and acrylic panels. It may lead to the potential cause of damages or corruptions.

Please keep the used tools or unused parts out of the reach of children after work.

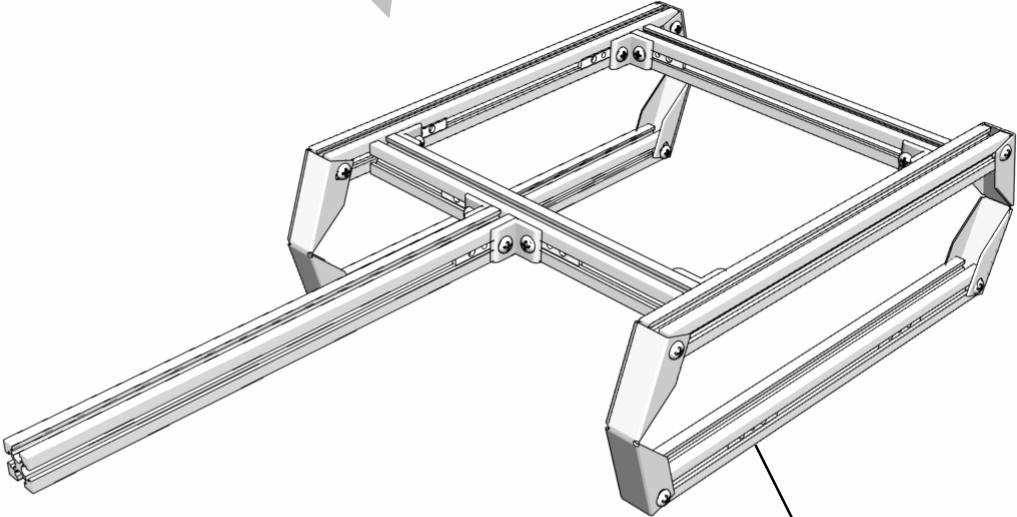
Top Part : Battery Assembly

Fix 256mm frame with CAP135 and connect with 192mm frame.

Basic Assembly
Refer to "Connecting Frames"



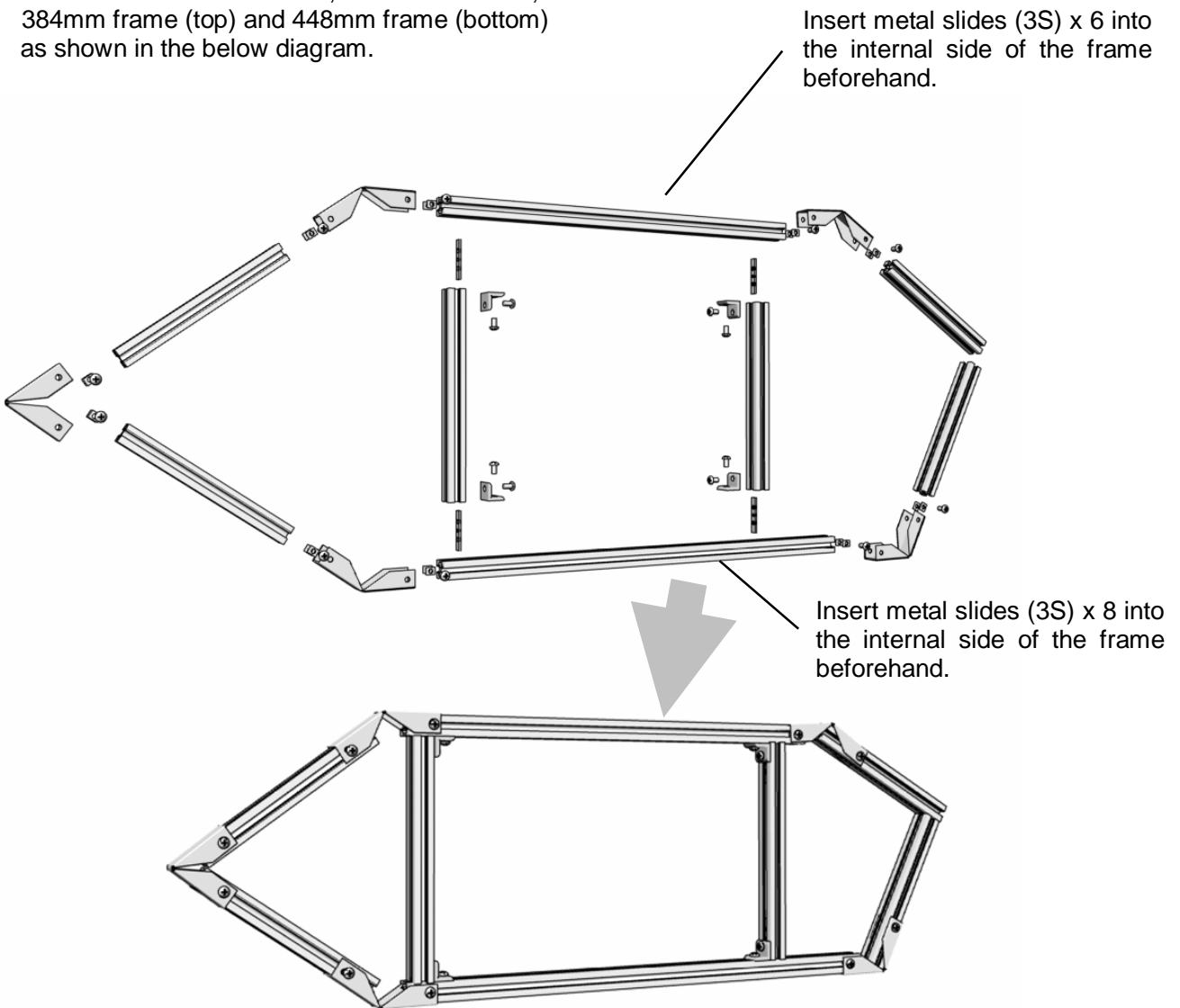
Basic Assembly
Refer to "Connecting Frames
with Making Angles".



Insert metal slides (3S) into the
external side of the frame beforehand.

Bottom Part: Vehicle Creation

- Create side surface of vehicle
Assemble 160mm frame x4, 192mm frame x2,
384mm frame (top) and 448mm frame (bottom)
as shown in the below diagram.



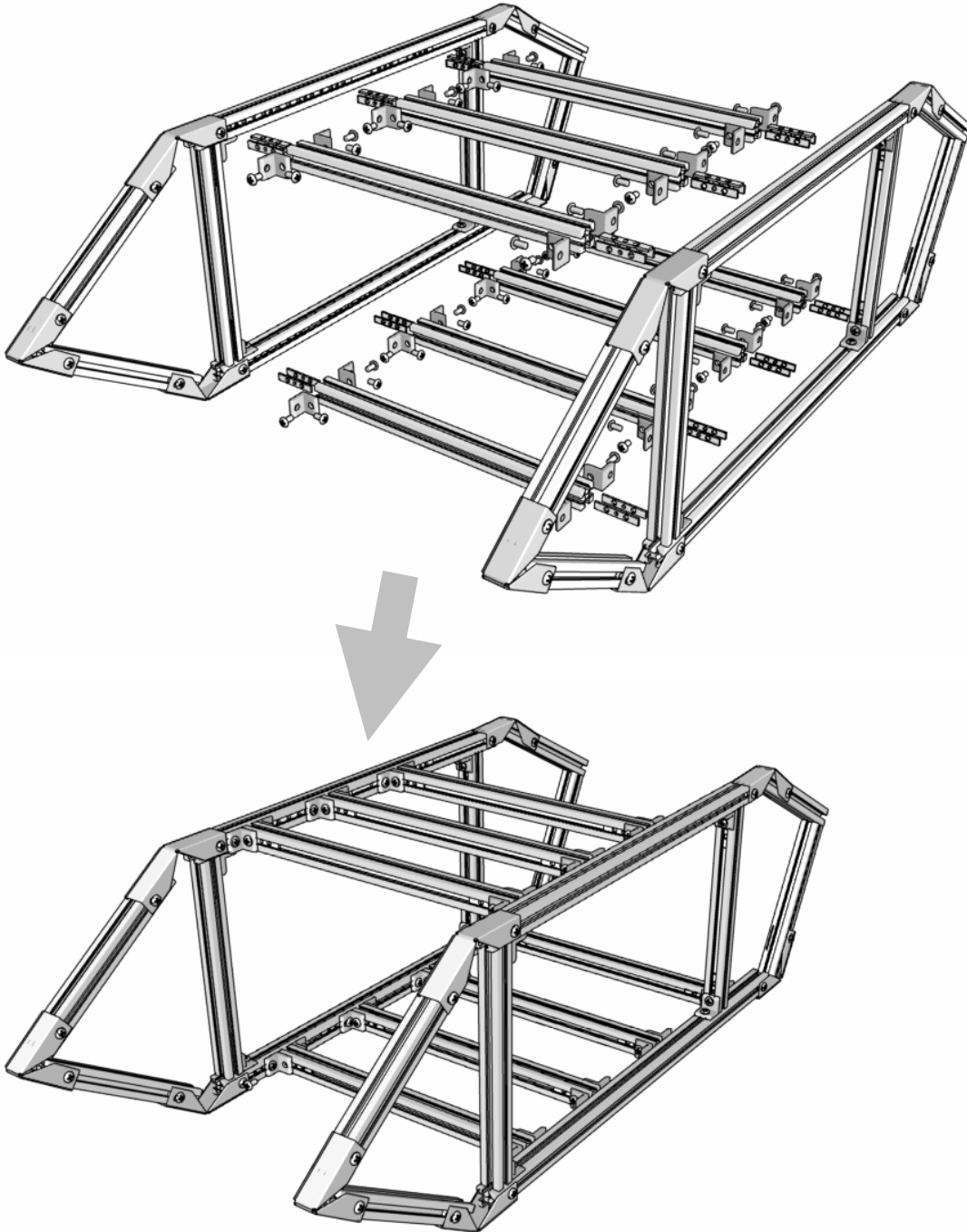
Create another side surface in the same way.

Point !

Mounting assembly parts will be done easily by placing an extra metal slide into top and bottom of the side surface of both 384mm and 448mm frames.

Refer to Basic Assembly< Fixing Drive>.

- Connect side surface of vehicle
Connect side surface of vehicle with 256mm frame.



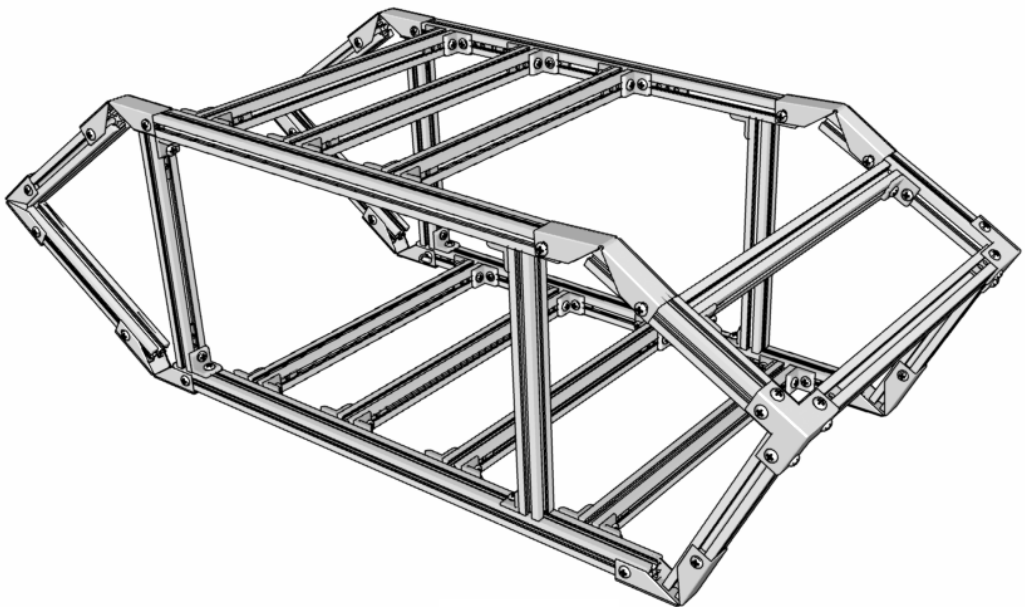
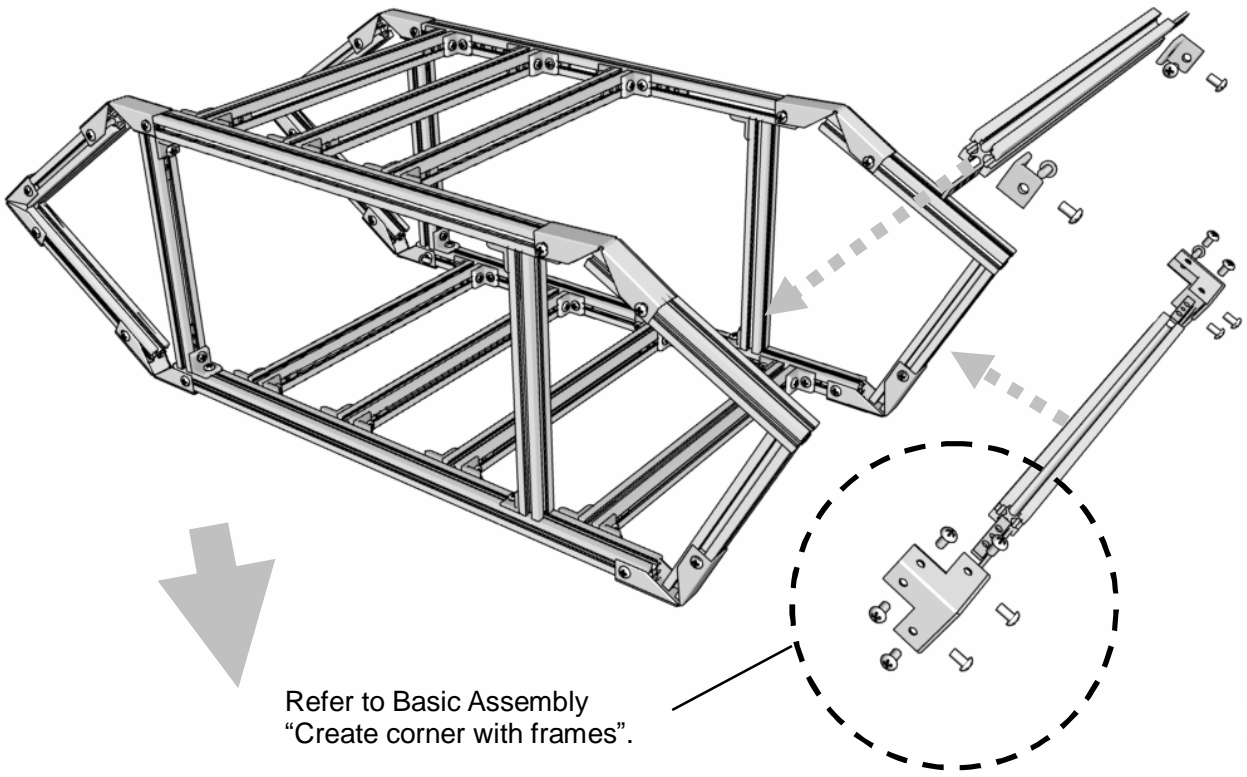
Point !

Insert metal slides into 256mm frame (3 pcs above) used for connecting side surface of vehicle beforehand in order to mount top part and battery.

Mounting motherboard will be done easily by placing an extra metal slide into 256mm frame (4 pcs below) used for connecting side surface of vehicle.

Refer to Basic Assembly< Fixing Motherboard>.

- Mounting power supply fixing frames
Mount 256mm frame for fixing power supply.

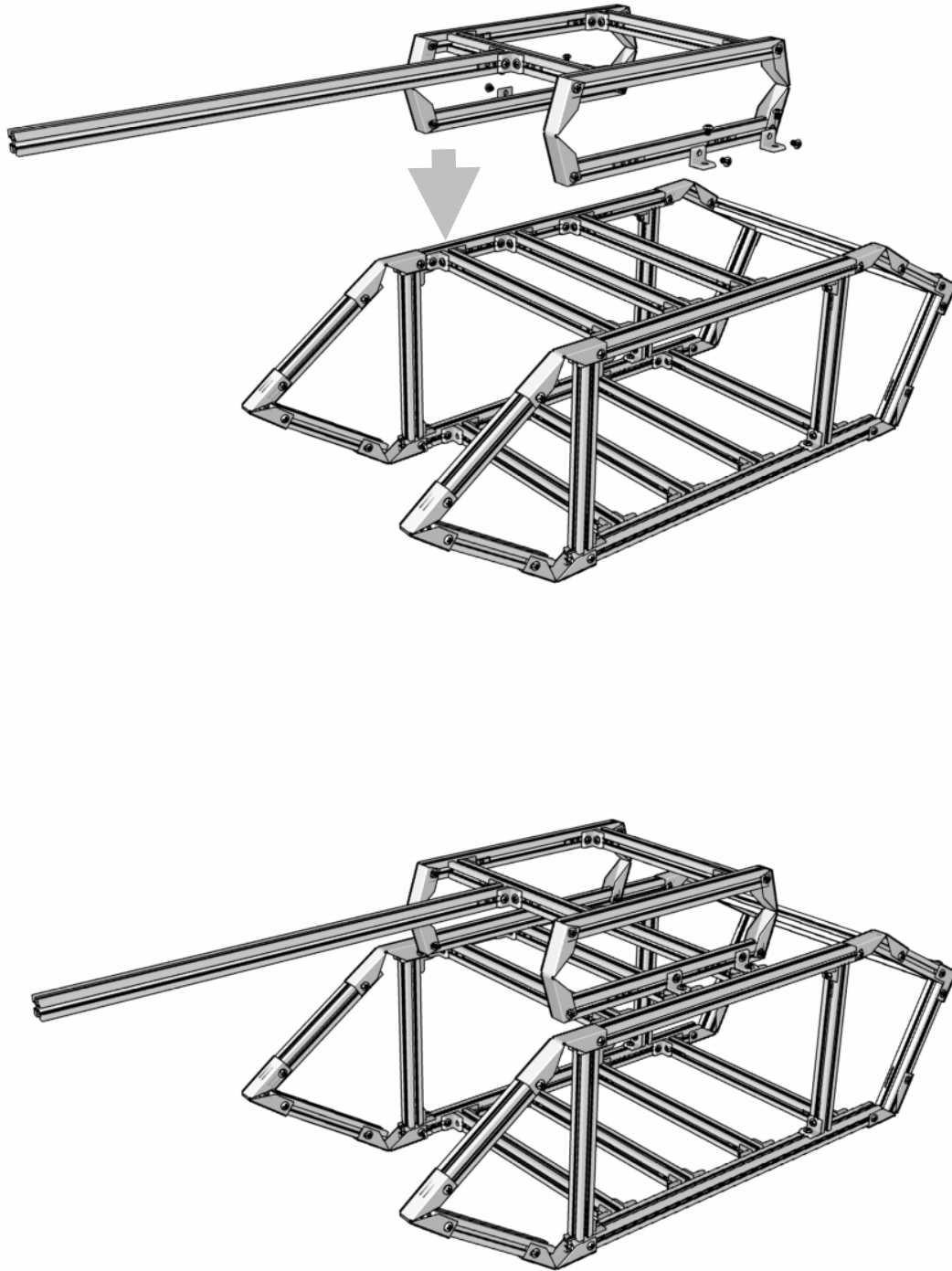


Point !

Mounting power supply and switch will be done easily by placing an extra metal slide into 256mm frame beforehand.
Refer to Basic Assembly< Fixing Power Supply>.

Battery and Vehicle Connection

Connect battery and vehicle with “brackets”.



Now Completed !

Please mount assembly parts according to your taste.

* Please refer to “Basic Assembly of Lubic” for mounting assembly parts.